

Calla P75 M PP Stool

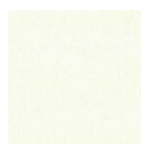
design Fabrizio Batoni, 2019

Bar stool with armrests and high backrest. Base with four legs in painted steel and shell in plastic. Optional: cushion upholstered in fabric, leather or faux leather. The stool in the version with plastic shell is also available in the version for outdoor use.

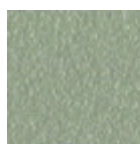


Colors and Materials

Structure



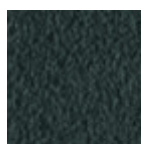
White Steel



Sand Steel



Pastel Yellow Steel



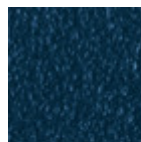
Grafite Steel



Black Steel



Light blue steel



Ocean Blue Steel



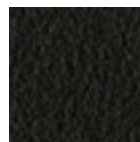
Bronze Steel



Fango Steel



Light Grey Steel



Brown Steel



Ocher Steel



Facepowder Pink Steel



Red steel



Sage Green Steel

Coating



Polypropylene

9 Colors

Dimensions

Dimensions

Image not found or type unknown

	cm	inch
A	108	42,5
B	52	20,5
C	52	20,5
D	76	29,9
E	98	38,6