

# POLTRONA LISA WATERPROOF

/ armchair Design Marcello Ziliani



archiproducts  
DESIGN AWARDS

WINNER 2018



AS AWARDED BY THE CHICAGO  
ATHENAEUM: MUSEUM OF  
ARCHITECTURE AND DESIGN



2860 ZE WP 88



2860 ZP WP 87

Seduta e schienale imbottiti con anima in multistrato curvato. Struttura a 4 gambe in acciaio tubolare ø mm 16 zincato e verniciato. La particolare conformazione dello schienale permette a Poltrona Lisa di essere appoggiata sul piano del tavolo per agevolare le operazioni di pulizia del pavimento. Impilabile. Per uso interno/esterno.

*Seat and back: upholstered. 4-leg frame in 16 mm diam. galvanized and coated tubular steel. Thanks to its large and embracing backrest, you can lean armchair Lisa on the table. Stackable. For indoor/outdoor use.*

## FINITURA TELAIO FRAME FINISHING

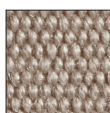
## TESSUTI E COLORI FABRICS AND COLOURS

### TESSUTO WATERPROOF WATERPROOF FABRIC



ZE

verniciato terracotta  
terracotta coated

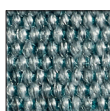


WP 88



ZO

verniciato avio  
air-force blue coated

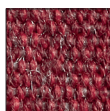


WP 86



ZP

verniciato rosa antico  
antique pink coated

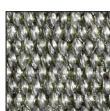


WP 87



ZV

verniciato verde oliva  
olive green coated



WP 89

### TESSUTO CLIENTE =

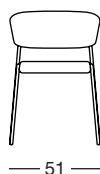
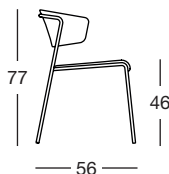
chiedere per minimo ordine.

Alla sezione "tessuti" disponibili ulteriori finiture.  
Fattibilità da valutare.

### CUSTOMER OWN FABRIC =

ask for the minimum order quantity.

All options available at "fabrics" section.  
Non-standard options to be verified.



Art. 2860

Imballo Packing	1 pezzo 1 piece
Peso unitario Unit weight	Kg 6,400
Misure imballo Packing sizes	57x53x80 cm

CATAS

Conforme EN 16139: 2013  
Compliant with EN 16139: 2013