

Legno

legno / wood / bois / madera

rovere / oak / chêne / roble



bianco
white
blanc
blanco



caffè
coffee
café
café



cenere
ash grey
cendre
ceniza



fumo
smoked grey
fumée
humo



naturale
natural
naturel
natural



carbone
coal black
charbon
carbon



neve
snow
neige
nieve



polvere
dust
poussière
polvo



tabacco
tobacco
tabac
tabaco



titanio
titanium
titane
titanio



wengé
wenge
wengé
wengue



biscotto
biscuit
biscuit
galleta



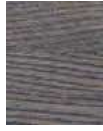
ardesia
slate grey
ardoise
pizarra



so wood
so wood
so wood
so wood



chalet
chalet
chalet
chalet



grigio luna
moon grey
gris luna
gris luna



fango
fango
fango
fango

noce / walnut / noyer / nogal



noce ossido
oxide walnut
noyer oxydé
nogal oxidado

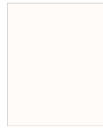
zebrano / zebrano / zébrano / zebrano



zebrano
zebrano
zebrano
zebrano

Metallo Outdoor

metallo verniciato opaco / matt painted metal / métal verni mat / metal barnizado opaco



bianco segnale
signal white
blanc signal
blanco señal



nero segnale
signal black
noir signal
negro señal



giallo oro
golden yellow
jaune or
amarillo oro



rosso rubino
ruby red
rouge rubis
rojo rubí



verde reseda
reseda green
vert réséda
verde reseda



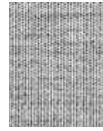
blu azzurro
light blue
bleu clair
azul oscuro



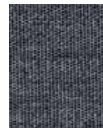
marrone arancio
orange brown
marron orange
marron naranja

Tessuti Outdoor

tessuti outdoor / outdoor fabrics / tissus outdoor / tejido exterior



609



209



419



706



303



800