

# FINITURE

Finishes . Finitions . Ausführungen . Acabados

## GHISA E ACCIAIO VERNICIATO PER INTERNO

Cast-iron and steel powder coated for indoor . Fonte et acier epoxy pour l'intérieur . Gusseisen und stahl lackiert fuer innenBereich . Hierro fundido y acero barnizado para interior



**\_NERO**  
Nero,  
finitura bucciata  
*Black,  
hammered finish*



**BI**  
Bianco,  
finitura gofrata  
*White,  
textured finish*



**AG**  
Alluminio,  
finitura gofrata  
*Aluminium,  
textured finish*



**GN**  
Grigio naturale,  
finitura gofrata  
*Natural grey,  
textured finish*



**9007**  
Alluminio,  
finitura liscia  
*Aluminium,  
smooth finish*



**AL**  
Alluminio,  
finitura liscia  
*Aluminium,  
smooth finish*



**TR**  
Verniciatura trasparente opaca,  
finitura liscia  
*Transparent matt powder coated,  
smooth finish*



**SK**  
Sabbia,  
finitura gofrata  
*Beige,  
textured finish*



**RO**  
Rosso,  
finitura gofrata  
*Red,  
textured finish*



**AR**  
Arancio,  
finitura gofrata  
*Orange,  
textured finish*



**GA**  
Grigio antracite,  
finitura gofrata  
*Anthracite grey,  
textured finish*



**BE**  
Beige,  
finitura gofrata  
*Beige,  
textured finish*



**AV**  
Avorio,  
finitura gofrata  
*Ivory,  
textured finish*



**MG**  
Marrone,  
finitura gofrata  
*Brown,  
textured finish*



**VG**  
Verde,  
finitura gofrata  
*Green,  
textured finish*



**GB**  
Grigio,  
finitura bucciata  
*Grey,  
hammered finish*



**RU**  
Ruggine,  
finitura gofrata  
*Rust,  
textured finish*

## GHISA E ACCIAIO VERNICIATO PER ESTERNO

Cast-iron and steel powder coated for outdoor . Fonte et acier epoxy pour l'extérieur . Gusseisen und stahl lackiert fuer aussen bereicht . Hierro fundido y acero barnizado para exterior



**NPE**  
Nero per esterno,  
finitura gofrata  
*Black for outdoor,  
textured finish*



**BIE**  
Bianco per esterno,  
finitura gofrata  
*White for outdoor,  
textured finish*



**9007E**  
Alluminio per esterno,  
finitura liscia  
*Aluminium for outdoor,  
smooth finish*



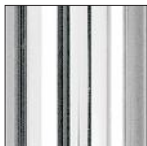
**6005E**  
Verde per esterno,  
finitura liscia  
*Green for outdoor,  
smooth finish*



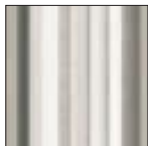
**GNE**  
Grigio naturale per esterno,  
finitura gofrata  
*Natural grey for outdoor,  
textured finish*

## ACCIAIO E ACCIAIO INOX

Steel and stainless steel . Acier et Inox . Stahl und Edelstahl . Acero y inox



**CR**  
Acciaio cromato  
*Chromed steel*



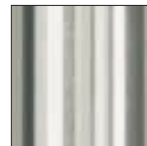
**ST**  
Acciaio satinato  
*Satinized steel*



**LU**  
Acciaio inox lucidato  
*Brushed s/steel*



**AC**  
Acciaio inox satinato  
*Brushed s/steel*



**AC 316**  
Acciaio inox AISI 316 per esterno  
*Brushed s/steel AISI 316 for outdoor*

## ALLUMINIO

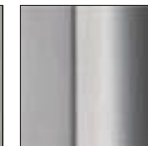
Aluminium . Aluminium . Aluminium . Aluminio



**LU**  
Alluminio lucidato  
*Polished aluminium*



**AS**  
Alluminio satinato  
*Satinized aluminium*



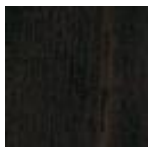
**AA**  
Alluminio anodizzato  
*Anodized aluminium*

## FAGGIO

Beech . Hêtre . Holzsäulen . Haya



**FA**  
Faggio naturale  
*Natural beech*



**W**  
Wengé  
*Wenge*



**N**  
Noce  
*Walnut*



**C**  
Ciliegio  
*Cherry*



**C2**  
Ciliegio 2  
*Cherry 2*

## ROVERE

Oak . Chêne . Eiche . Roble



**RV**  
Rovere naturale  
*Natural oak*



**W**  
Wengé  
*Wenge*